



Teradata Business Intelligence Optimizer

Release Definition

Release 13.00
B035-4104-099C
March 2010

The product or products described in this book are licensed products of Teradata Corporation or its affiliates.

Teradata, BYNET, DBC/1012, DecisionCast, DecisionFlow, DecisionPoint, Eye logo design, InfoWise, Meta Warehouse, MyCommerce, SeeChain, SeeCommerce, SeeRisk, Teradata Decision Experts, Teradata Source Experts, WebAnalyst, and You've Never Seen Your Business Like This Before are trademarks or registered trademarks of Teradata Corporation or its affiliates.

Adaptec and SCSISelect are trademarks or registered trademarks of Adaptec, Inc.

AMD Opteron and Opteron are trademarks of Advanced Micro Devices, Inc.

BakBone and NetVault are trademarks or registered trademarks of BakBone Software, Inc.

EMC, PowerPath, SRDF, and Symmetrix are registered trademarks of EMC Corporation.

GoldenGate is a trademark of GoldenGate Software, Inc.

Hewlett-Packard and HP are registered trademarks of Hewlett-Packard Company.

Intel, Pentium, and XEON are registered trademarks of Intel Corporation.

IBM, CICS, DB2, MVS, RACF, Tivoli, and VM are registered trademarks of International Business Machines Corporation.

Linux is a registered trademark of Linus Torvalds.

LSI and Engenio are registered trademarks of LSI Corporation.

Microsoft, Active Directory, Windows, Windows NT, and Windows Server are registered trademarks of Microsoft Corporation in the United States and other countries.

Novell and SUSE are registered trademarks of Novell, Inc., in the United States and other countries.

QLogic and SANbox trademarks or registered trademarks of QLogic Corporation.

SAS and SAS/C are trademarks or registered trademarks of SAS Institute Inc.

SPARC is a registered trademarks of SPARC International, Inc.

Sun Microsystems, Solaris, Sun, and Sun Java are trademarks or registered trademarks of Sun Microsystems, Inc., in the United States and other countries.

Symantec, NetBackup, and VERITAS are trademarks or registered trademarks of Symantec Corporation or its affiliates in the United States and other countries.

Unicode is a collective membership mark and a service mark of Unicode, Inc.

UNIX is a registered trademark of The Open Group in the United States and other countries.

Other product and company names mentioned herein may be the trademarks of their respective owners.

THE INFORMATION CONTAINED IN THIS DOCUMENT IS PROVIDED ON AN "AS-IS" BASIS, WITHOUT WARRANTY OF ANY KIND, EITHER EXPRESS OR IMPLIED, INCLUDING THE IMPLIED WARRANTIES OF MERCHANTABILITY, FITNESS FOR A PARTICULAR PURPOSE, OR NON-INFRINGEMENT. SOME JURISDICTIONS DO NOT ALLOW THE EXCLUSION OF IMPLIED WARRANTIES, SO THE ABOVE EXCLUSION MAY NOT APPLY TO YOU. IN NO EVENT WILL TERADATA CORPORATION BE LIABLE FOR ANY INDIRECT, DIRECT, SPECIAL, INCIDENTAL, OR CONSEQUENTIAL DAMAGES, INCLUDING LOST PROFITS OR LOST SAVINGS, EVEN IF EXPRESSLY ADVISED OF THE POSSIBILITY OF SUCH DAMAGES.

The information contained in this document may contain references or cross-references to features, functions, products, or services that are not announced or available in your country. Such references do not imply that Teradata Corporation intends to announce such features, functions, products, or services in your country. Please consult your local Teradata Corporation representative for those features, functions, products, or services available in your country.

Information contained in this document may contain technical inaccuracies or typographical errors. Information may be changed or updated without notice. Teradata Corporation may also make improvements or changes in the products or services described in this information at any time without notice.

To maintain the quality of our products and services, we would like your comments on the accuracy, clarity, organization, and value of this document. Please e-mail: teradata-books@lists.teradata.com

Any comments or materials (collectively referred to as "Feedback") sent to Teradata Corporation will be deemed non-confidential. Teradata Corporation will have no obligation of any kind with respect to Feedback and will be free to use, reproduce, disclose, exhibit, display, transform, create derivative works of, and distribute the Feedback and derivative works thereof without limitation on a royalty-free basis. Further, Teradata Corporation will be free to use any ideas, concepts, know-how, or techniques contained in such Feedback for any purpose whatsoever, including developing, manufacturing, or marketing products or services incorporating Feedback.

Copyright © 2010 by Teradata Corporation. All Rights Reserved.

Purpose

The Teradata Business Intelligence Optimizer (Teradata BIO) suite of products allows users to use the Teradata Database as a ROLAP platform for multidimensional analytics.

This *Teradata Business Intelligence Optimizer Release Definition* provides an overview of Teradata BIO and its first product, Teradata Aggregate Designer, which recommends Aggregate Join Indexes (AJIs) and allows users to design and customize AJIs. The document contains important information received late in the release and not included in other documentation associated with this release. This *Release Definition* also contains the following information:

- Supported Teradata Database versions
- Product release version
- Teradata Aggregate Designer installation information
- Documentation that supports this release
- Training and support centers

Audience

Teradata Business Intelligence Optimizer Release Definition is intended for system administrators, analysts, engineers, and other database specialists who perform product installations or use Teradata Aggregate Designer.

Supported Releases

Teradata Business Intelligence Optimizer Release Definition supports Teradata Aggregate Designer 13.00. Unless otherwise specified in this document, “this release” refers to Teradata Aggregate Designer 13.00.

Additional Information

Additional information that supports Teradata Business Intelligence Optimizer is available at the web sites listed in the table that follows. In the table, *mmyx* represents the publication date of a manual, where *mm* is the month, *y* is the last digit of the year, and *x* is an internal

publication code. Match the *mmv* of a related publication to the date on the cover of this book. This ensures that the publication selected supports the same release.

Type of Information	Description	Source
Additional product information	<p>Use the Teradata Information Products web site to view or download the most recent versions of all manuals.</p> <p>Access a list of specific manuals that supply related or additional information to this manual.</p>	<ol style="list-style-type: none"> 1 Go to http://www.info.teradata.com/. 2 Under the Online Publications subcategory, Browse by Category, click Data Warehousing. 3 Do one of the following: <ul style="list-style-type: none"> • For a list of Teradata Tools and Utilities documents, click Teradata Tools and Utilities, and then select an item under Releases or Products. • Select a link to any of the data warehousing publications categories listed.
CD-ROM images	<p>Access a link to a downloadable CD-ROM image of all customer documentation for this release. Customers are authorized to create CD-ROMs for their use from this image.</p>	<ol style="list-style-type: none"> 1 Go to http://www.info.teradata.com/. 2 Under the Online Publications subcategory, Browse by Category, click Data Warehousing. 3 Click CD-ROM List and Images. 4 Follow the ordering instructions.
Ordering information for manuals	<p>Use the Teradata Information Products web site to order printed versions of manuals.</p>	<ol style="list-style-type: none"> 1 Go to http://www.info.teradata.com/. 2 Under Print & CD Publications, click How to Order. 3 Follow the ordering instructions.
General information about Teradata	<p>The Teradata home page provides links to numerous sources of information about Teradata. Links include:</p> <ul style="list-style-type: none"> • Executive reports, case studies of customer experiences with Teradata, and thought leadership • Technical information, solutions, and expert advice • Press releases, mentions, and media resources 	<ol style="list-style-type: none"> 1 Go to Teradata.com. 2 Select a link.

Table of Contents

Preface	3
Purpose	3
Audience	3
Supported Releases	3
Additional Information	3

Chapter 1: Release Information	11
Overview	11
Workflow.....	11
Product Version Number.....	12
Supported Operating Systems	12
Supported Versions of Teradata Database	13
Documentation	13
Installation.....	13
Release Notes.....	15

Chapter 2: Teradata Business Intelligence Optimizer Documentation ..	17
Downloadable Documentation	17
Release Definition	17
User Manuals	17
Print Documentation and CD-ROMs.....	18
Orange Books	18
Publication Titles and IDs	19

Chapter 3:	
Customer Assistance	21
Customer Education.....	21
Customer Support	21

List of Figures

Figure 1: Teradata Business Intelligence Optimizer Workflow	12
---	----

List of Tables

Table 1: Teradata BIO 13.00 Documentation 19

This chapter provides an overview of the Teradata BIO suite and its components. Browse through these topics to learn more:

- [Overview](#)
- [Workflow](#)
- [Product Version Number](#)
- [Supported Operating Systems](#)
- [Supported Versions of Teradata Database](#)
- [Documentation](#)
- [Installation](#)
- [Release Notes](#)

Overview

Teradata BIO is a suite of tools to optimize the Teradata Database platform as a ROLAP platform for multidimensional analytics. The Teradata BIO suite consists of three components:

- Teradata Aggregate Designer
- Teradata Schema Workbench
- Teradata OLAP Connector

Each of these components can work together or independently to create, optimize, and accelerate the use of Teradata for Business Intelligence.

Teradata BIO is optimized for use with Teradata data sources to accelerate the use of ROLAP.

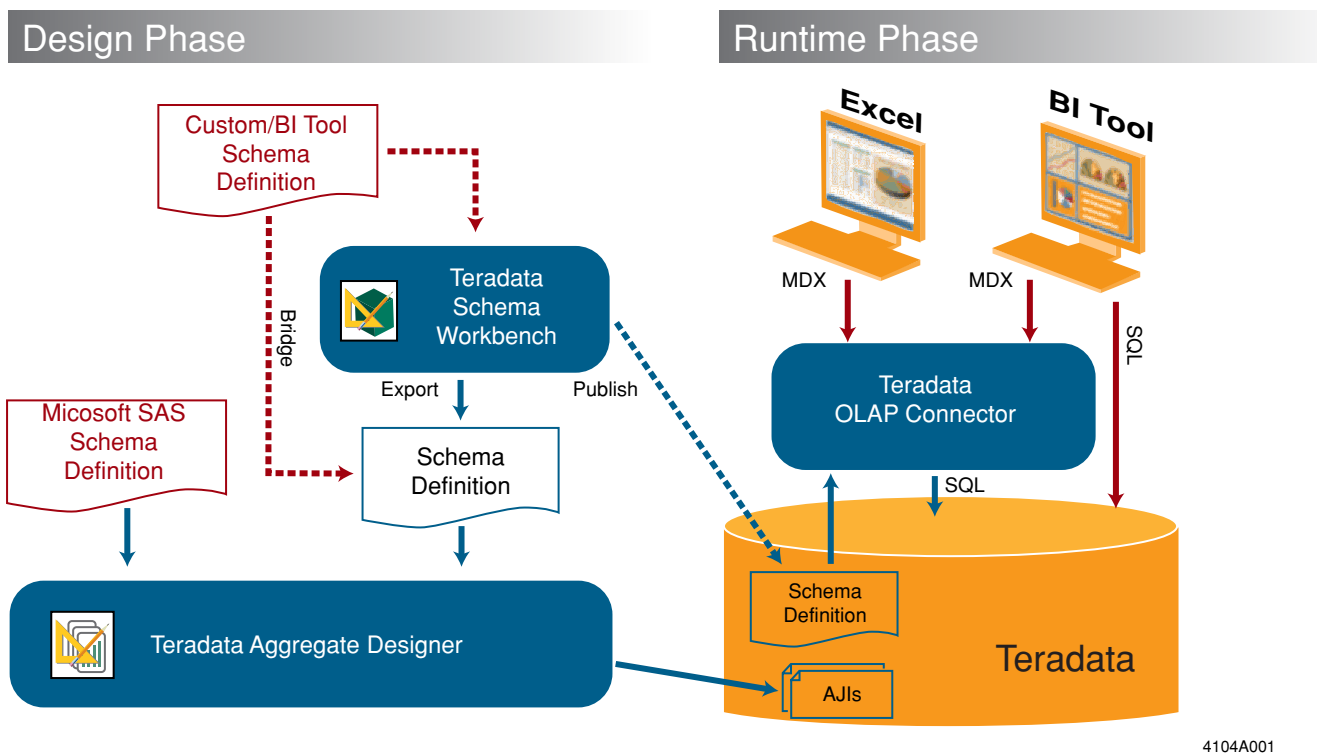
Teradata BIO (the Teradata Aggregate Designer component) automatically creates the appropriate, efficient Data Definition Language (DDL) statements for creating an AJI. Because AJIs are populated and maintained automatically by Teradata Database, DML and Data Manipulation Language (DNML) statements are not created when working with Teradata targets.

Workflow

The typical Teradata Business Intelligence Optimizer workflow consists of the following steps:

- 1 Define the schema for the targeted OLAP solution.
- 2 Use Teradata Schema Workbench to build the schema definition.
- 3 Export the schema definition into an XML file.
- 4 Teradata Aggregate Designer reads the schema definition files and uses it to qualify the usage of AJIs. It also reads native Microsoft SSAS schema definition files.
- 5 For other Teradata BIO tools, leverage the Schema Workbench to build the schema definition manually, or leverage a transformation tool or a native bridge (if available).
- 6 Teradata Aggregate Designer builds and deploys the AJIs.
- 7 Teradata OLAP Connector can be used to connect Microsoft Excel or other MDX-based tools to connect directly to Teradata Database. Teradata OLAP Connector uses the schema definition defined by the Schema Workbench for MDX to SQL optimization.

Figure 1: Teradata Business Intelligence Optimizer Workflow



Product Version Number

Teradata Aggregate Designer 13.00

Supported Operating Systems

Teradata Aggregate Designer 13.00 is supported on Microsoft® Windows® operating system.

- Windows Server 2008 Standard
- Windows Server 2003 Standard SP2
- Windows Vista SP1
- Windows XP SP3

Supported Versions of Teradata Database

Teradata Business Intelligence Optimizer 13.00 supports Teradata Database 12.0 and 13.0.

Documentation

Teradata Business Intelligence Optimizer Release Definition, B035-4104-099C.

Teradata Aggregate Designer User Guide, B035-4103-099A.

Installation

Teradata Aggregate Designer, the first product of the Teradata BIO suite, is distributed on a CD, BCD0-1292-0000.

To install Teradata Aggregate Designer

- 1 Click *setup.exe* in the installation package folder to start the installation. After a splash screen appears briefly, the **InstallShield Wizard** window opens.

Note: Click **Cancel** if you want to cancel the installation.

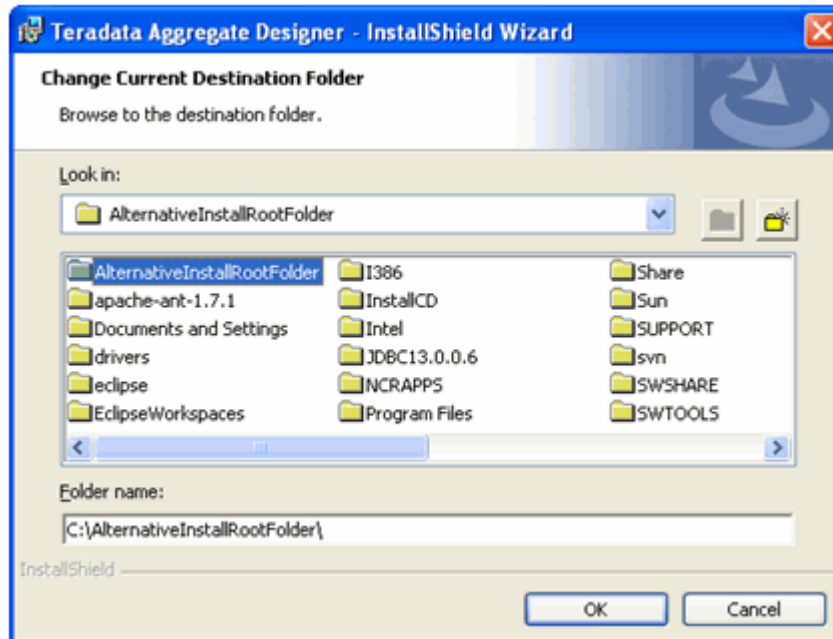
- 2 Click **Next**.
- 3 Select the **I accept the terms of the license agreement** option to accept the license agreement, and click **Next**.
- 4 Click **Next** to accept the default installation directory, which is *C:\Program Files\Teradata\Teradata Business Intelligence Optimizer\13.00\Teradata Aggregate Designer*.

OR

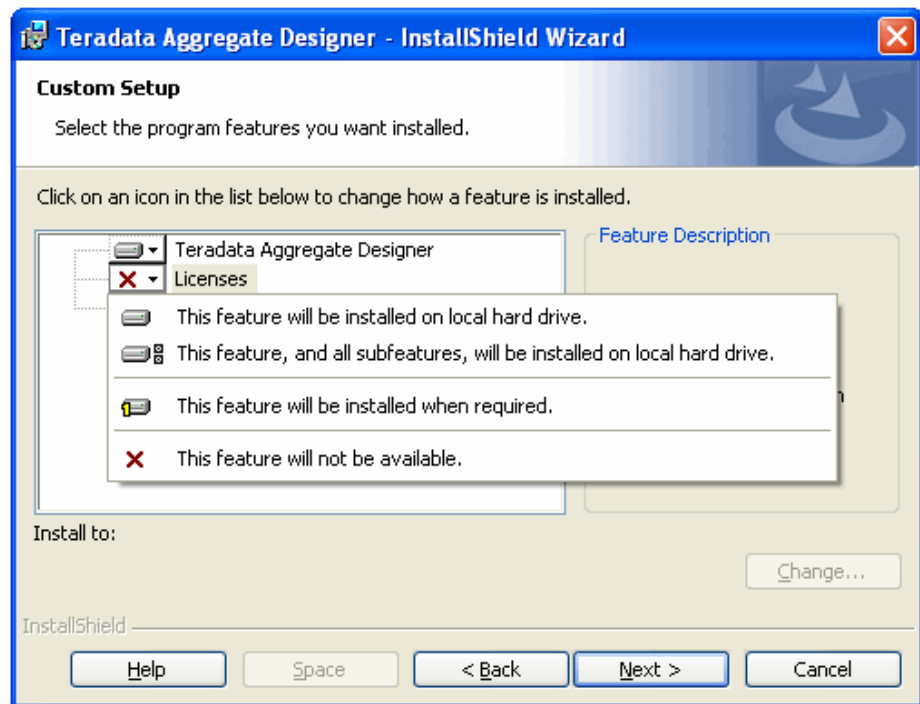
Click **Change** to change the destination path. Browse to a new install root folder in your Windows file system and click **OK**.

The default install root folder is *C:\Program Files*. Once you change the install root folder, the suffix *\Teradata\Teradata Business Intelligence Optimizer\13.00\Teradata Aggregate Designer* is appended to the new install path. For example, if you select *C:\AlternativeInstallRootFolder* as the install root folder, the final install path is

C:\AlternativeInstallRootFolder\Teradata\Teradata Business Intelligence Optimizer\13.00\Teradata Aggregate Designer\.



- 5 Select the **Typical** or **Custom** button to define the setup type.
If you select **Typical**, go to [step 7](#).
- 6 [Optional] To install licenses and sources, select the **Custom** button. In the **Custom Setup** window, perform the following steps:
 - a Click the **Licences** drop-down arrow to select the appropriate option from the **Licenses** drop-down menu.



- b Click the **Sources** drop-down arrow to select the appropriate source code.
- c Click **Next**.
- 7 In the **Ready to Install the Program** window, click **Install**. The **Installing Teradata Aggregate Designer** window opens.
- 8 Click **Finish** when the installation is completed.

Release Notes

There are no release notes for this release.

Teradata Business Intelligence Optimizer Documentation

Teradata BIO documentation consists of product-specific user manuals and a release definition (this document). These are available from several sources:

- By download from <http://www.info.teradata.com/>
- By request

Downloadable Documentation

Free, downloadable versions of Teradata BIO documentation are available from <http://www.info.teradata.com/> including:

- Web-only release definitions
- PDF versions of all documentation available for this release

To locate a publication title or ID to use when searching for publications associated with this release, see “[Publication Titles and IDs](#)” on page 19.

Release Definition

Release definitions are occasionally updated to capture products released asynchronously to the Teradata GCA date. Updated versions are available on the web.

To view the most recent iteration of this document

- 1 Go to <http://www.info.teradata.com/>, and click **Data Warehousing** under the left menu.
- 2 Click **Teradata Release Definitions** under **Data Warehousing Publications**.
- 3 Click **Teradata Business Intelligence Optimizer** under **Teradata Release Definitions**. A list of Teradata Business Intelligence Optimizer release definitions appears.
- 4 Locate *Teradata Business Intelligence Optimizer Release Definition*, B035-4104-mmyx.

User Manuals

Product-specific user manuals are available from the web. Use the Teradata Information Products Publishing Library site to view or download the most recent versions of all manuals.

To view specific user manuals or manuals associated with specific products

- 1 Go to <http://www.info.teradata.com/>.
- 2 Click **General Search** under the left menu.
- 3 Enter pertinent information about a specific product or manual, such as the title in the **Publication Title, Description, Class, or Keywords** box.
- 4 Click **Search**.

Print Documentation and CD-ROMs

You can order printed manuals and CDs from Teradata Information Products Publishing for a nominal cost. Information on whether printed copies of documentation are available and how to order them is also accessible from <http://www.info.teradata.com/>.

When ordering printed documentation or Teradata User Documentation CDs, include the publication ID number. To locate a publication ID numbers, see “[Publication Titles and IDs](#)” on page 19.

To order printed documentation or CDs

- 1 Go to <http://www.info.teradata.com/>.
- 2 Under **Print & CD Publications**, click **How to Order**.
- 3 Follow the ordering instructions.

Orange Books

Orange Books enhance product-specific manuals by describing the best practices for completing a task or solving a problem using the tools and features of one or more products. The content is more technical than that found in white papers.

Orange Books are available to Teradata customers with a service contract, Teradata Professional Services associates, and Teradata Customer Service associates. Teradata @ Your Service membership is also required.

To access Orange Books

- 1 Go to <http://www.teradata.com/TeradataAtYourService/>.
- 2 Follow the instructions to log on or to register.
- 3 From the Teradata @ Your Service home page, type *Orange Books* in the **Search Knowledge Repositories** box, and then click **Search**.

Publication Titles and IDs

The following documents are available in support of Teradata Business Intelligence Optimizer Release 13.00. In the table, *mmyx* represents the publication date of a manual, where *mm* is the month, *y* is the last digit of the year, and *x* is an internal publication code.

Table 1: Teradata BIO 13.00 Documentation

Publication Type	Publication Title	Publication ID
General Reference		
	<i>Teradata Business Intelligence Optimizer Release Definition</i>	B035-4104- <i>mmyx</i>
	<i>Teradata Aggregate Designer User Guide</i>	B035-4103- <i>mmyx</i>

CHAPTER 3

Customer Assistance

To help you make the most of your Teradata system, trained professionals are available to assist you. There are a number of training and support centers you can contact to learn more about Teradata applications or to get help with your Teradata system. Assistance is also available at <http://www.teradata.com/TeradataAtYourService/>.

Customer Education

Teradata Customer Education delivers training for your global workforce—from scheduled public courses and customized on-site training to the latest E-learning solutions. For information on the latest classes, schedules, and the Teradata Certification Program, go to the Teradata Customer Education web site at <http://www.TeradataEducationNetwork.com/>.

Customers and Teradata associates can enroll in classes online at <http://www.TeradataEducationNetwork.com/>, or by contacting the representative for your region. To find the representative for your region, use the **Contact Us** link at the bottom of the Teradata Education Network page.

Customer Support

Customer support is available around-the-clock, 7 days a week. Trained professionals at a Remote Services Center (RSC) are available to assist you. To learn more about Teradata Customer Services, go to Teradata @ Your Service at <http://www.teradata.com/TeradataAtYourService/>.

If you purchased an ESS (Enterprise System Support) support contract, a customized support plan was created for you. Please refer to your support plan for contact information. In addition, a unique PIN (Personal Identification Number) was given to your site. If you are an ESS customer, you must contact the regional RSC to request support, and you must use your PIN.

Note: PINs are not published; if you misplace your PIN, contact your account representative.

